
THE RIVERPLACE GAZETTE

August 2004 • Issue 8

Exciting New Developments at RiverPlace Condominiums

The Development Team is thrilled to announce that there is a stunning new development in the design of RiverPlace Condominiums that will make Lafayette Heights soar to new levels of grandeur. The new design was submitted to the Planning Commission of July 15th and the first public hearing is scheduled for August 23rd.

Call the RiverPlace Hospitality Center at **389-9112** to schedule an appointment to view the *final design* of the buildings and floor plans and learn how you can become a member of the RiverPlace Insider Circle.

Breathtaking Views of Downtown Baton Rouge



Downtown Baton Rouge has several hidden treasures that we often overlook during our busy days at work. Paula and I set out to find a few of them for you. We stepped out of the office just in time to take the **Capitol Park Trolley**, which stops ap-

proximately every 10 minutes between 10:30 a.m. and 2:30 p.m., Monday through Friday. The trolley is a great way to travel in Downtown Baton Rouge because it is air conditioned, clean, fast and free.



The trolley brought us directly to the **Main Street Market** where we decided to have a light lunch at **Serop's Express**. Afterwards, we perused the gifts and goodies at **Bangles and Dangles** and **Coyote Creek**.

In an effort to give you an idea of what your views would be from a **Condominium at RiverPlace**, we also took a little field trip to the State Capitol! The views from the 27th floor of the State Capitol are breathtaking!

The Heidelberg Hotel and Capitol House to become a Hilton Hotel

The Wilbur Marvin Foundation has announced that the Franchise License Agreement has been finalized to convert The Heidelberg Hotel and Capitol House into the 293-room Hilton Baton Rouge Capitol Park.



“We are thrilled to be bringing the Hilton brand into our community with the renovation of the vacant Heidelberg Hotel & Capitol House which shows the bright economic future of downtown Baton Rouge and the entire Parish,” says Mayor-President Bobby Simpson. “The new Hilton Baton Rouge Capitol Park will play a big role in the future success of our newly expanded River Center and many other downtown businesses.”

The anticipated opening of the Hilton Baton Rouge Capitol Park is during the 1st quarter of 2006 with renovations beginning this September. The hotel will feature 293 guestrooms, two full service restaurants, room service, a bar and lounge, fitness center, a pool overlooking the Mississippi River and retail space.

Sushi Restaurant coming to downtown Baton Rouge

Lafayette's Award winning **Tsunami** restaurant will open a downtown Baton Rouge location in Spring 2005 as part of the new **Shaw Center for the Arts**.

Tsunami will offer sushi dishes and Asian-inspired fare that have earned its Lafayette counterpart numerous awards. The restaurant will occupy approximately 4,000 square feet of the sixth level of the Shaw Center for the Arts. On this top level, **Tsunami** will offer fine dining along a wall of glass that frames views of the Mississippi River and downtown Baton Rouge. The restaurant will also feature outdoor dining with tables that spill out onto the open-air **Irene W. Pennington Rooftop Terrace** and **Sculpture Garden**.

YMCA Expands to meet the demands of Downtown Baton Rouge

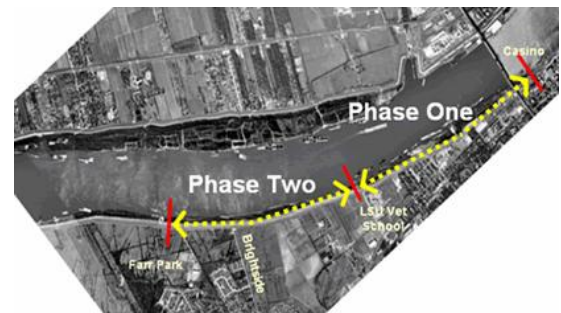
Due to the popularity of the class, **The Charles W. Lamar, Jr. YMCA** has expanded by adding a new spinning classroom! The new private classroom is complete with a stadium style cycling floor and a large video screen to provide the feel that you are cycling in the mountains or another exciting setting.



Another addition to the **YMCA** is a *new cardio section*! This new area helped relieve a lot of congestion in the workout facility. The total expansion tallied over 3400 square feet allowing enough room for a **Smoothie King**, which will be opening this month!

For more information about the **Charles W. Lamar, Jr. YMCA** call 612-9622

New Bicycle Path for Downtown



Officials conducted a groundbreaking ceremony Monday, July 19th at 1 p.m. for a new Bike Path and Pedestrian path that will connect Downtown Baton Rouge to the LSU Campus. Work on the first of two phases, a 2-mile levee top segment extending from the end of the downtown promenade just north of the I-10 Mississippi River bridge to Skip Bertman Drive at LSU, will begin soon after the ceremony. The first phase will be completed in 6 months. The 15 foot wide path will include separate lanes for bicycles and walkers/joggers as well as lighting, seating and water fountains. The bike path will link to the existing one mile riverfront promenade in Downtown Baton Rouge.